

PRODUCT DETAILS



SHOWER- BLADE MOUNTED OVERHEAD BRACED (BO-S)



The BO is the blade mounted option in TPI's overhead-braced cubicle offering, renowned for strength, functionality and economy. As with pedestal-mounts, the BO design delivers the lowest cost for materials used.

Available as Supply & Install.

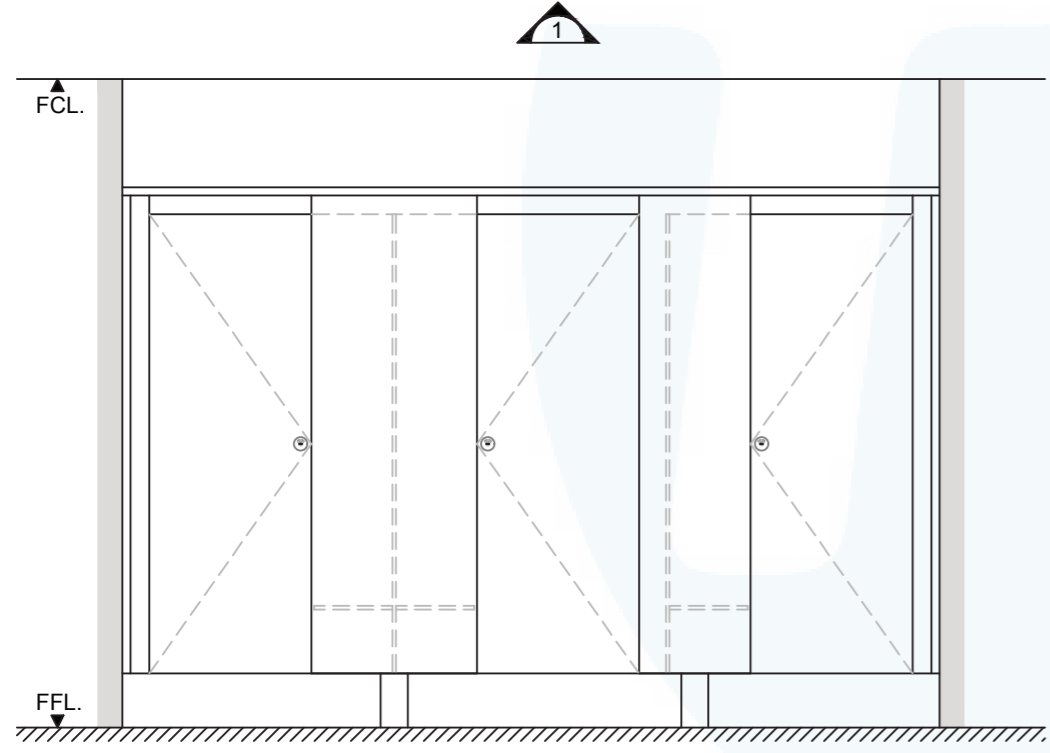
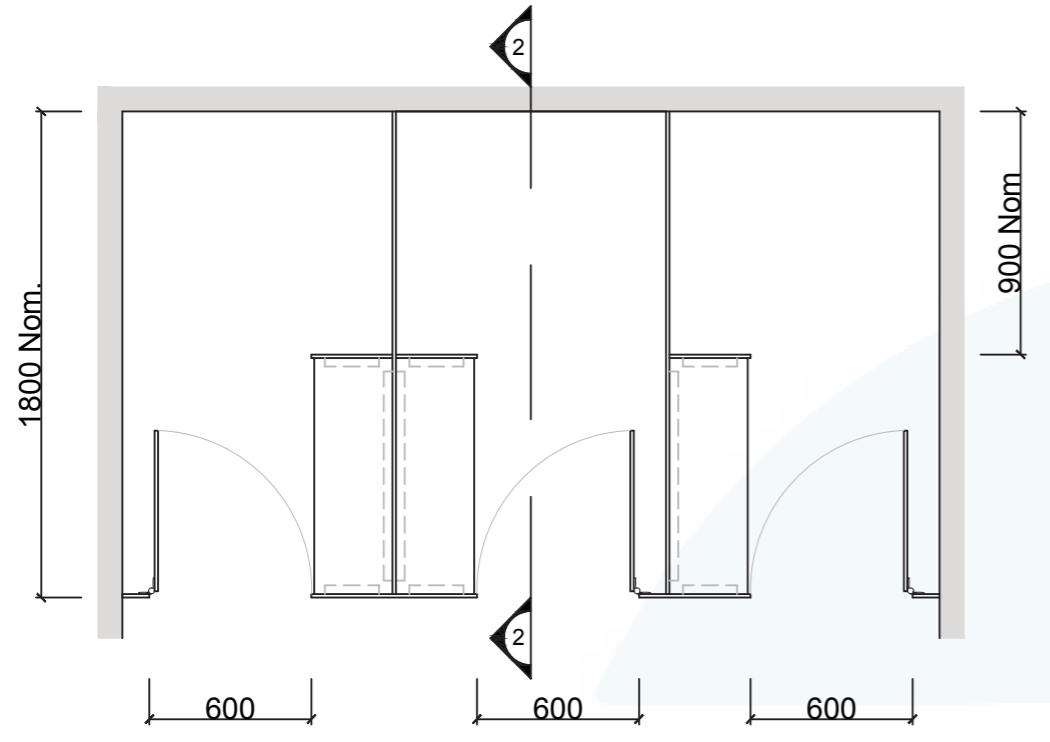
Available as Supply only.

How to Specify TPI's Displayed Configuration

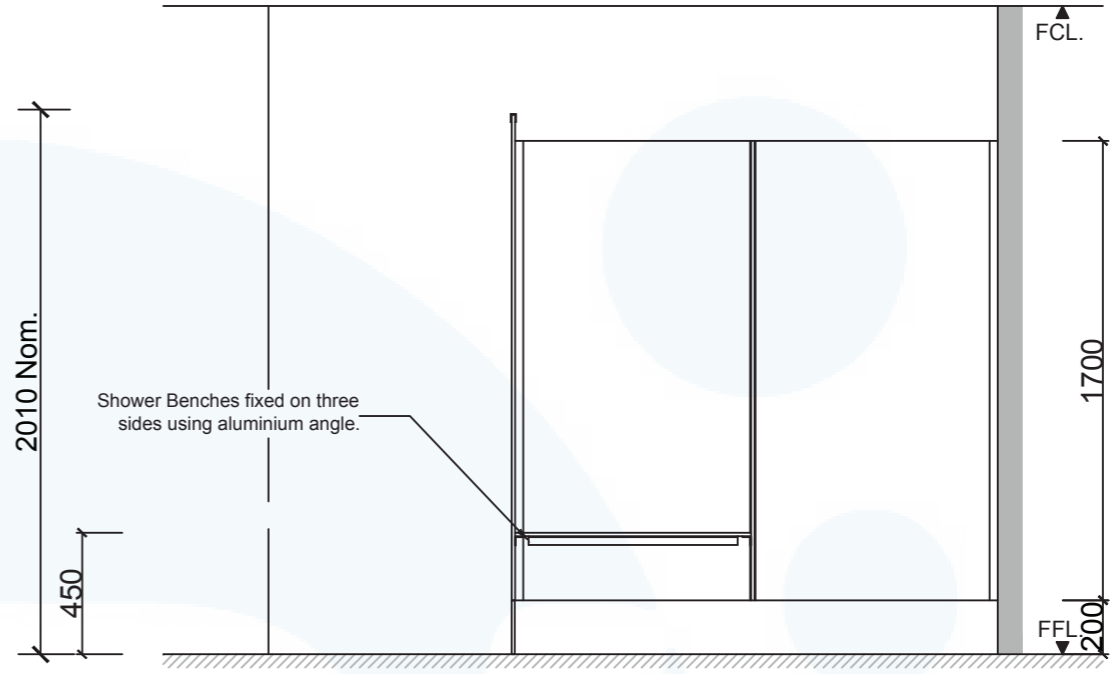
TPI BO-S-13CL Blade mounted overhead braced Shower with seat/shelf and splash nib in 13mm Compact Laminate. Option with Modulux® Total Privacy Solution. Door Furniture to be Metlam® Xcel series. Screw fixing.

Additional Information

Standard Dimensions	Height: 2010mm (standard) Depth: 1800mm nominal Frontal: 300mm minimum (w) for structural integrity Doors: 1700mm (h) x 595mm (w) – 600mm opening Ambulant Doors: 1700 (h) x 720-750mm (w) Shower Seat: 300mm x 900mm nominal Splash Nib: 320mm x 1700mm nominal Floor Clearance: 200mm
Material Options	13mm Compact Laminate
Privacy Edge (optional)	TPI's patented Modulux® Total Privacy Solution for the ultimate in cubicle privacy.
Door Furniture	Metlam® Xcel series (standard) Metlam® Xcel series Black (optional) Novas Pinnacle (optional) Novas Ultima (optional) Metlam® 300 (optional)
Aluminium Profile	Square Clear Anodised Square Powdercoated



1 FRONT ELEVATION



2 SECTION

SYSTEM

TPI-BO-S: BLADE MOUNTED & OVERHEAD BRACED - SHOWER

MATERIAL AVAILABILITY

- 13mm Compact Laminate

NOTES:

ALL FIXINGS SCREWS ARE 304 GRADE STAINLESS STEEL

NOT TO SCALE

ALL DIMENSIONS ARE IN MILLIMETRES. FIGURED DIMENSIONS ARE NOMINAL ONLY. DO NOT SCALE OFF DRAWING. THIS DESIGN IS COPYRIGHT AND MAY NOT BE USED WITHOUT THE WRITTEN PERMISSION OF THE DESIGNER

DRAWING

TPI-BO-S DETAILED DESIGN

ISSUE / REVISION: 03

DWG NO.

TPI-BO-S

DATE DRAWN 22.3.17

DRAWN BY CAP

M GS

