

PRODUCT DETAILS



SHOWER – CEILING SUSPENDED FLOATING BASE (CS-S)



CS cubicles are an enduring classic in TPI's range, desirable for their appearance to float above your featured floor in defiance of gravity. Underpinning their light touch, TPI's superior engineering means our CS cubicles remain solid, ridged and sturdy, long into the future. By avoiding floor connections the CS cubicle eliminates dirt traps and mop detritus ensuring a pleasant and airy environment. Easy to clean also means lower maintenance costs.

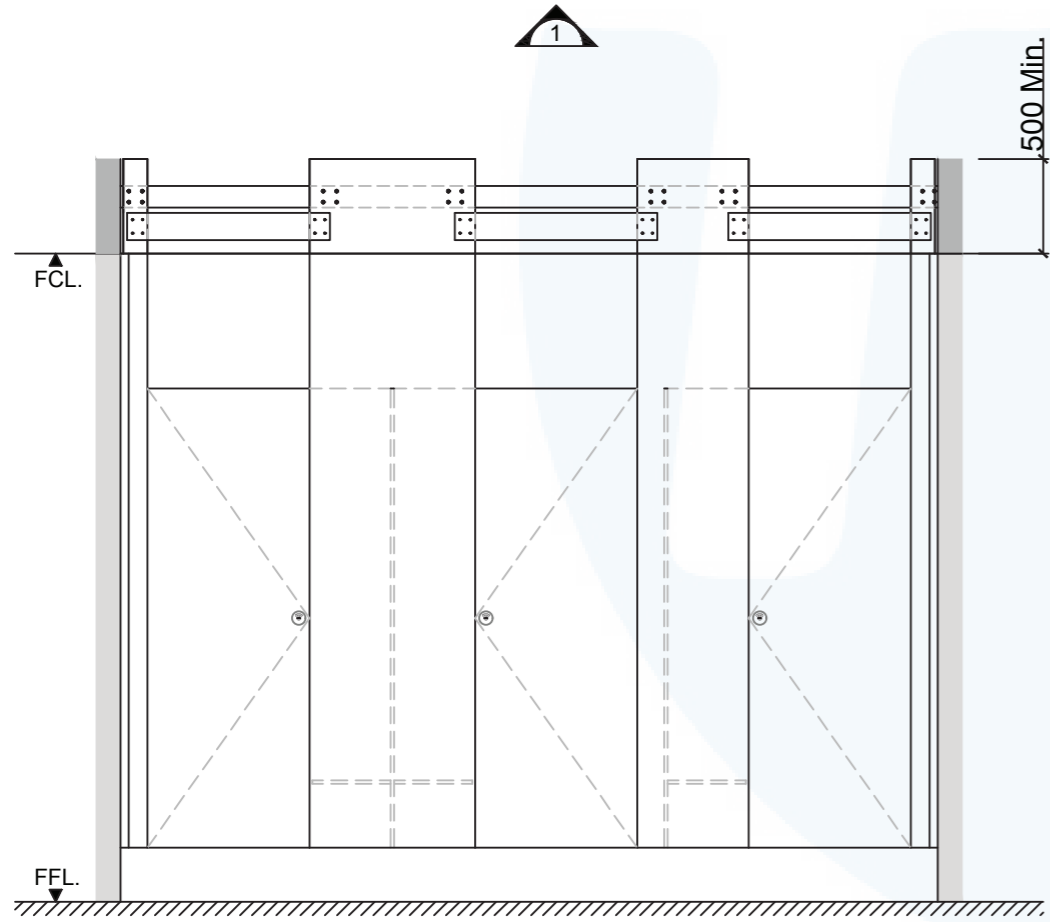
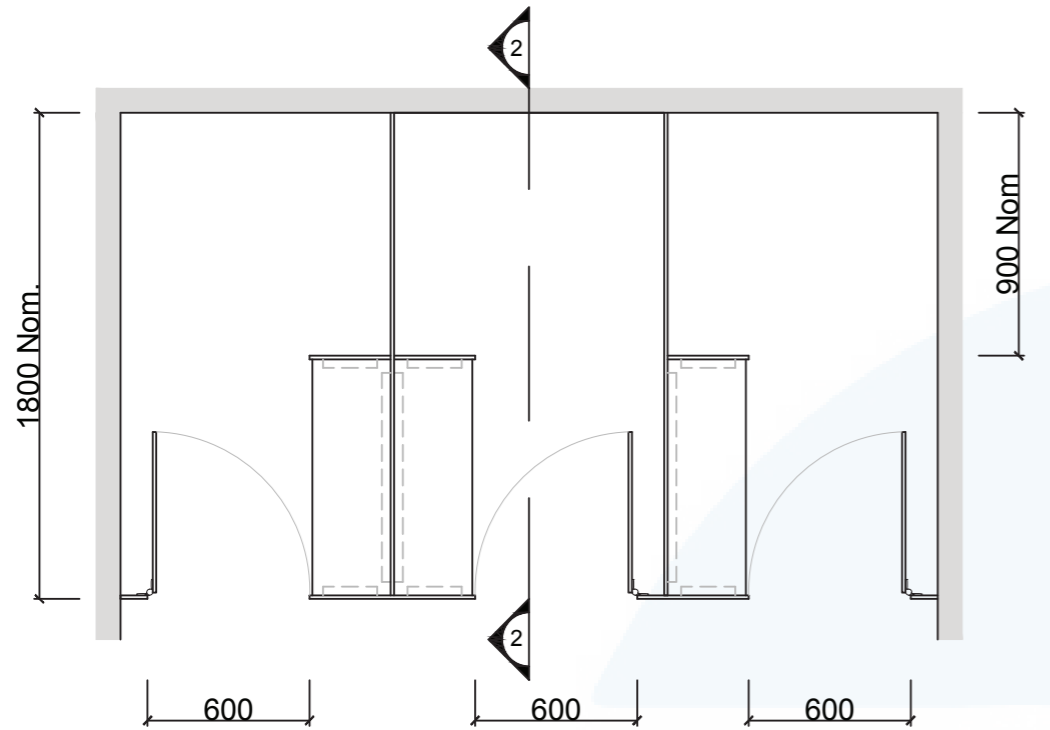
Available as Supply & Install only.

How to Specify TPI's Displayed Configuration

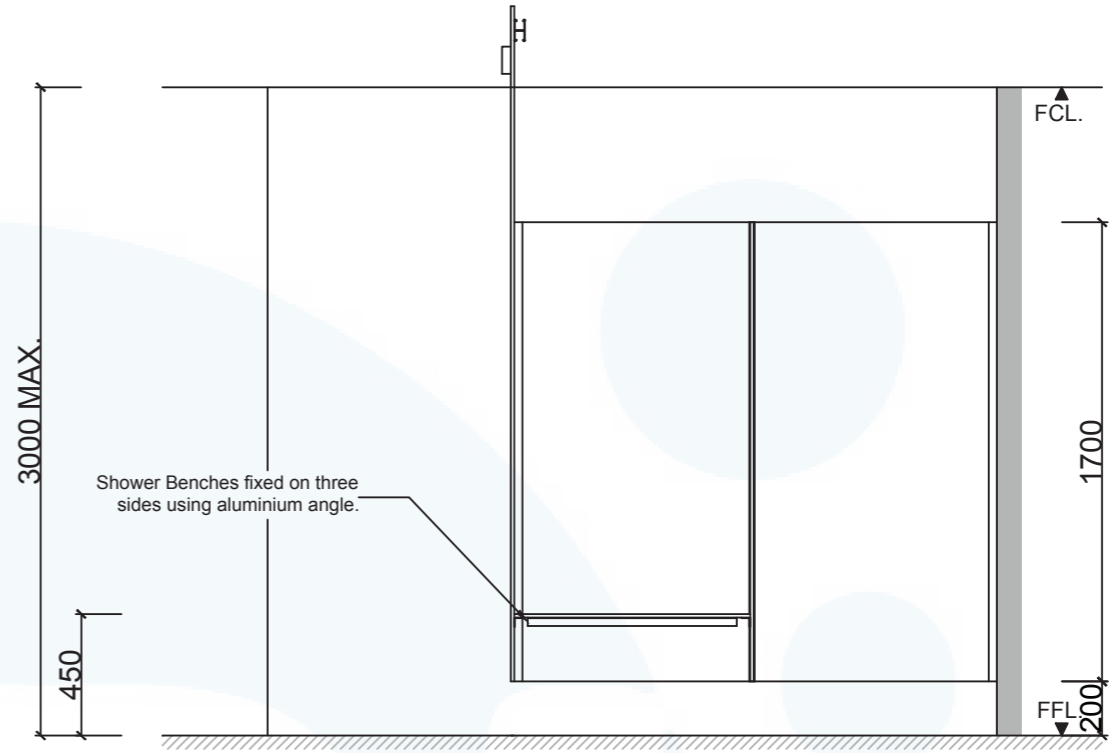
TPI CS-S-13CL-Ceiling Suspended Floating Base Shower with shower seat/shelf and splash nib in 13mm Compact Laminate. Door Furniture to be Metlam Xcel series. Aluminium to be Square Clear Anodised. Screw Fixing.

Additional Information

Standard Dimensions	Height: 2700mm (maximum) Depth: 1800mm nominal Frontal: 300mm minimum (w) Doors: 1700mm (h) x 595mm (w) – 600mm opening Ambulant Doors: 1700 mm (h) x 720-750mm (w) Shower Seat: 300mm x 900mm nominal Splash Nib: 320mm x 1700mm nominal Floor Clearance: 200mm
Material Options	13mm Compact Laminate
Privacy Edge (optional)	TPI's patented Modulux® Total Privacy Solution for the ultimate in cubicle privacy.
Door Furniture	Metlam® Xcel series (standard) Metlam® Xcel series Black (optional) Novas Pinnacle (optional) Novas Ultima (optional) Metlam® 300 (optional)
Aluminium Profile	Square Clear Anodised Square Powdercoated



1 FRONT ELEVATION



2 SECTION

SYSTEM
TPI-CS-S: CEILING SUSPENDED
- SHOWER

MATERIAL AVAILABILITY
• 13mm Compact Laminate

NOTES:
ALL FIXINGS SCREWS ARE 304
GRADE STAINLESS STEEL

NOT TO SCALE
ALL DIMENSIONS ARE IN
MILLIMETRES.
FIGURED DIMENSIONS ARE
NOMINAL ONLY. DO NOT SCALE
OFF DRAWING. THIS DESIGN IS
COPYRIGHT AND MAY NOT BE
USED WITHOUT THE WRITTEN
PERMISSION OF THE DESIGNER

DRAWING
TPI-CS-S DETAILED DESIGN

ISSUE / REVISION: 03
DWG NO.

TPI-CS-S

DATE DRAWN 17.5.17
DRAWN BY CAP

M GS

