

PRODUCT DETAILS



TOILET CUBICLE – FLOOR MOUNTED FREE STANDING (FF)



A highly resolved design with a simple shape that sits well in any room. The FF is the dinner suit of cubicles. Quiet lines, great in a row, its minimalism makes the FF a strong contender for briefs requiring prestige.

Secret-fixed to the floor with a clean overhead line incorporating flush T joins allows the FF to create a single structural element in a room.

Recommended by TPI for prestige applications, Floor Mounted, Free Standing cubicles can be built economically, to great effect, in Compact Laminate.

Available as Supply & Install only.

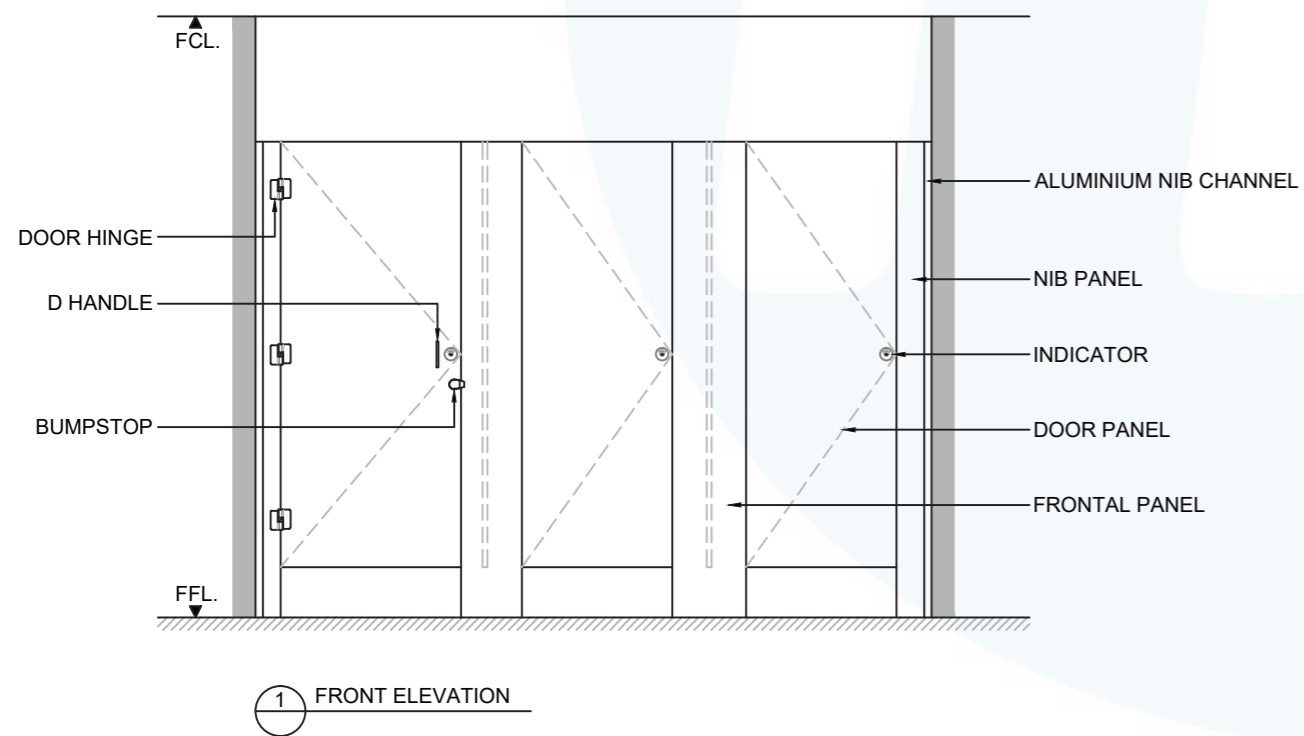
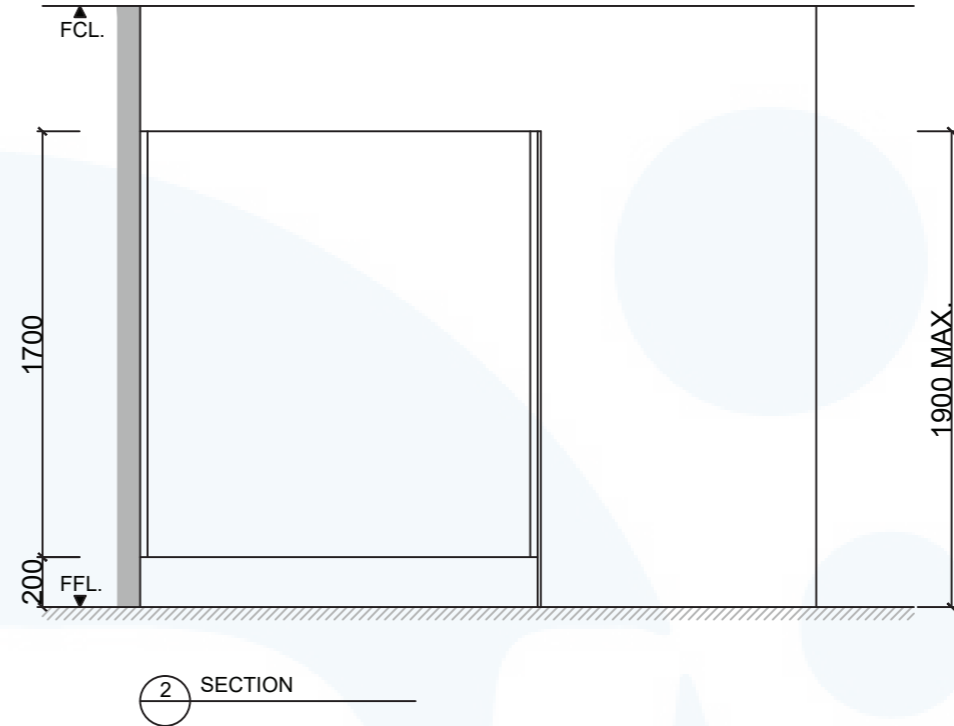
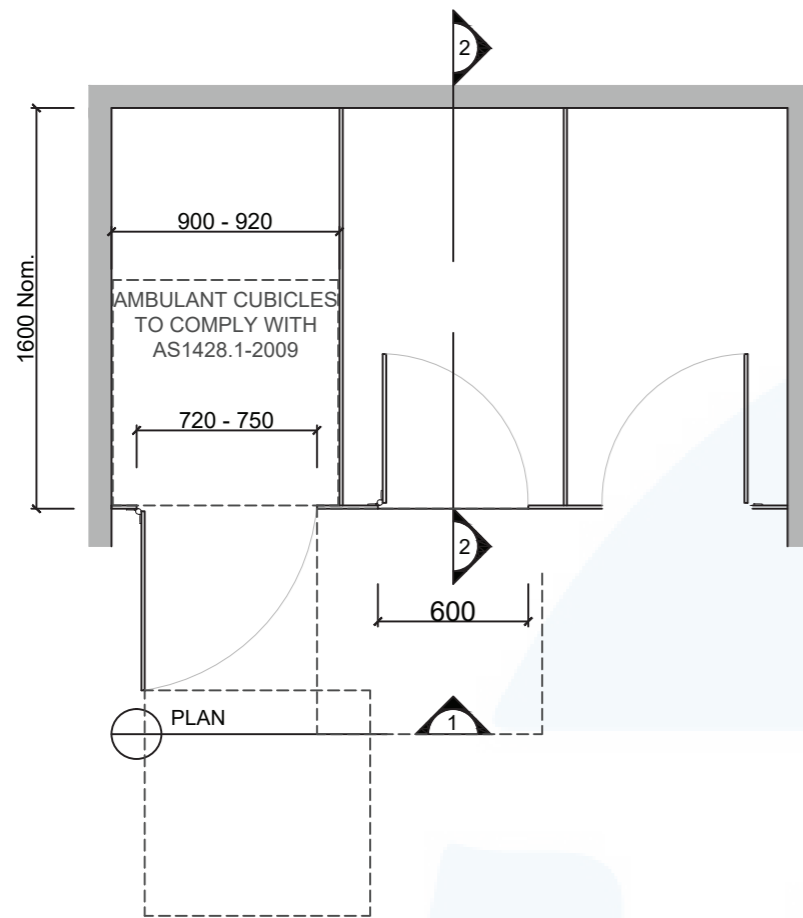
How to Specify TPI's Displayed Configuration

TPI FF13CL Floor Mounted Free Standing in 13mm Compact Laminate. Option with Modulux® Total Privacy Solution. Door Furniture to be Metlam Xcel series. Aluminium to be Square Clear Anodised. Screw fixing.

NOTE: This system can only be installed on a concrete slab.
Not recommended for schools

Additional Information

Standard Dimensions	Height: 1900mm (maximum) Depth: 1600mm nominal Frontal: 250mm minimum (w) for structural integrity Doors: 1700mm (h) x 595mm (w) – 600mm opening Ambulant Doors: 1700mm (h) x 720-750mm (w) Floor Clearance: 200mm
Material Options	13mm Compact Laminate
Privacy Edge (optional)	TPI's patented Modulux® Total Privacy Solution for the ultimate in cubicle privacy (available only in 13mm Compact Laminate)
Door Furniture	Metlam® Xcel series (standard) Metlam® Designer Series Black (optional) Novas Pinnacle (optional) Metlam® 300 (optional)
Aluminium Profile	Square Clear Anodised Square Powdercoated



SYSTEM
TPI-FF: FLOOR MOUNTED FREE STANDING

MATERIAL AVAILABILITY
• 13mm Compact Laminate

NOTES:
ALL FIXINGS SCREWS ARE 304 GRADE STAINLESS STEEL

NOT TO SCALE
ALL DIMENSIONS ARE IN MILLIMETRES. FIGURED DIMENSIONS ARE NOMINAL ONLY. DO NOT SCALE OFF DRAWING. THIS DESIGN IS COPYRIGHT AND MAY NOT BE USED WITHOUT THE WRITTEN PERMISSION OF THE DESIGNER

DRAWING
TPI-FF DETAILED DESIGN

ISSUE / REVISION: 02
DWG NO.

TPI-FF
DATE DRAWN 10.5.16
DRAWN BY PB

APPROVED BY:

MGS



NOTE: This system can only be installed on a concrete slab.