

PRODUCT DETAILS



TOILET CUBICLE – FULL HEIGHT (FH) NEW



FH-O CHANNEL FIXED
(ALUMINIUM AT CEILING JOINT)

The FH Full Height partition system is the perfect system for complete cubicle privacy. The FH system has floor to ceiling panels and doors with clearances of 20mm FFL and 80mm FCL. The 80mm clearance at the top of the doors allows the lift off hinges to function in case of emergency. The FH partition system is the next best thing to an individual room but at a fraction of the cost.

The Full Height partition system is the perfect option for unisex cubicles and it complies with the NCC(BCA) 2015 F2.5(a)(i) requirements for unisex facilities. Enhanced privacy and security can be delivered by adding TPI's Modulux Total Privacy Solution which completely eliminates the door gaps.

The FH is anchored directly to the floor and therefore is only available in our waterproof material compact laminate.

Available as Supply & Install only.

How to Specify TPI's Displayed Configuration

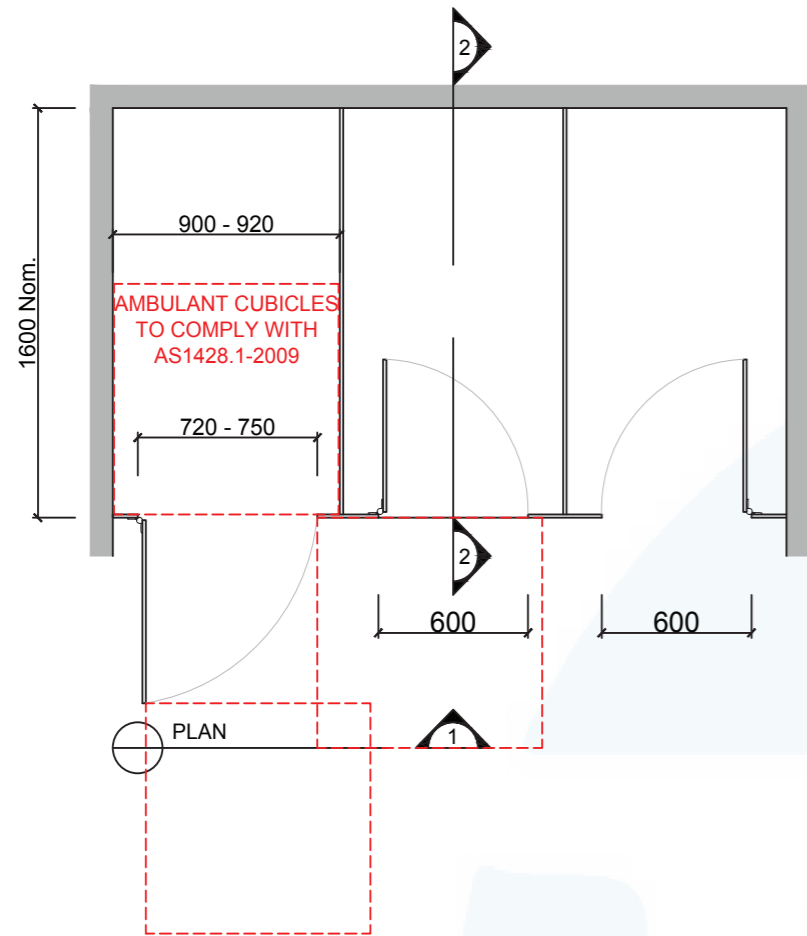
TPI FHa13CL Full height in 13mm compact laminate. Option with Modulux® Total Privacy Solution. Door Furniture to be Metlam Xcel series. Aluminium to be Square Clear Anodised. Screw fixing.



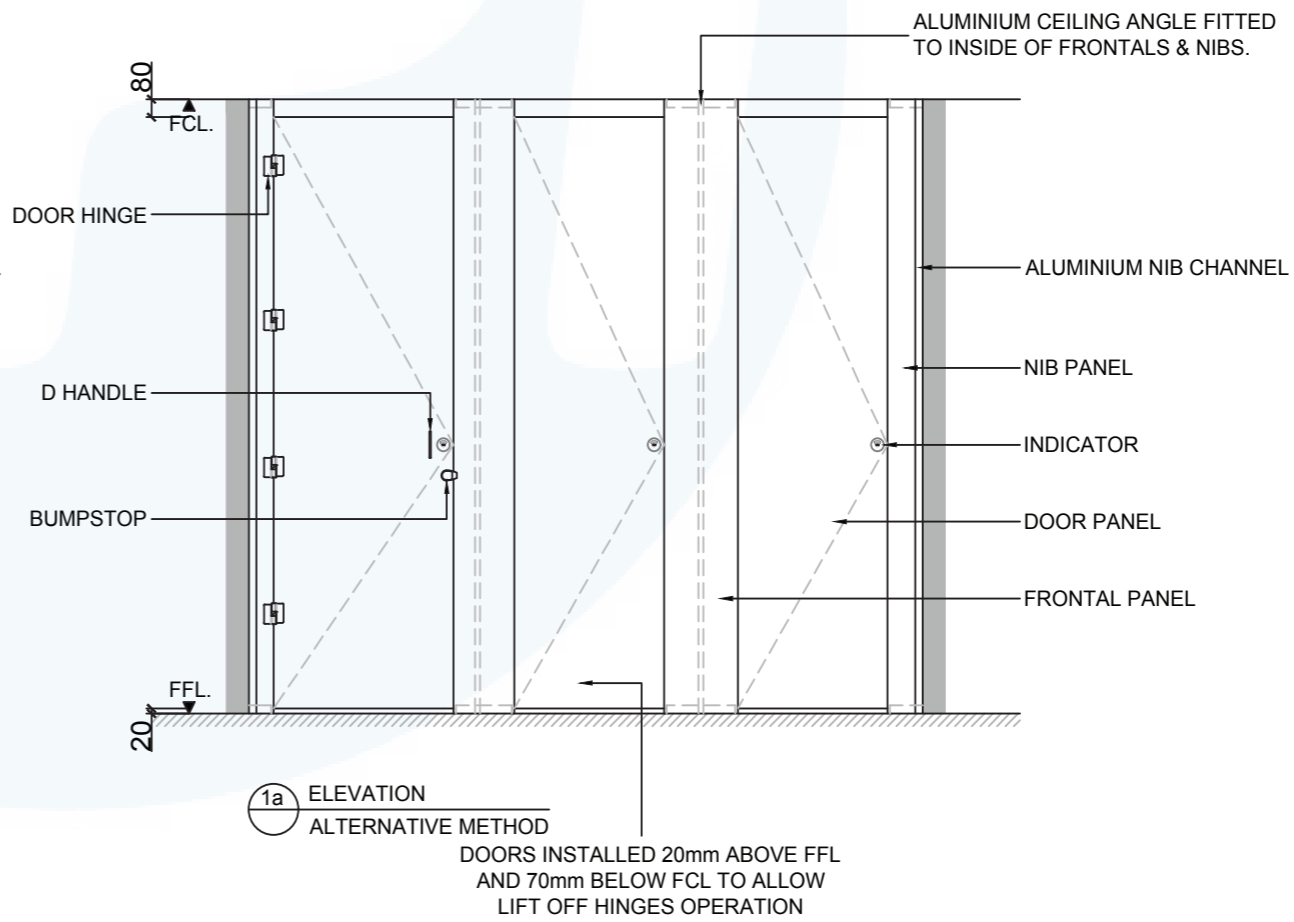
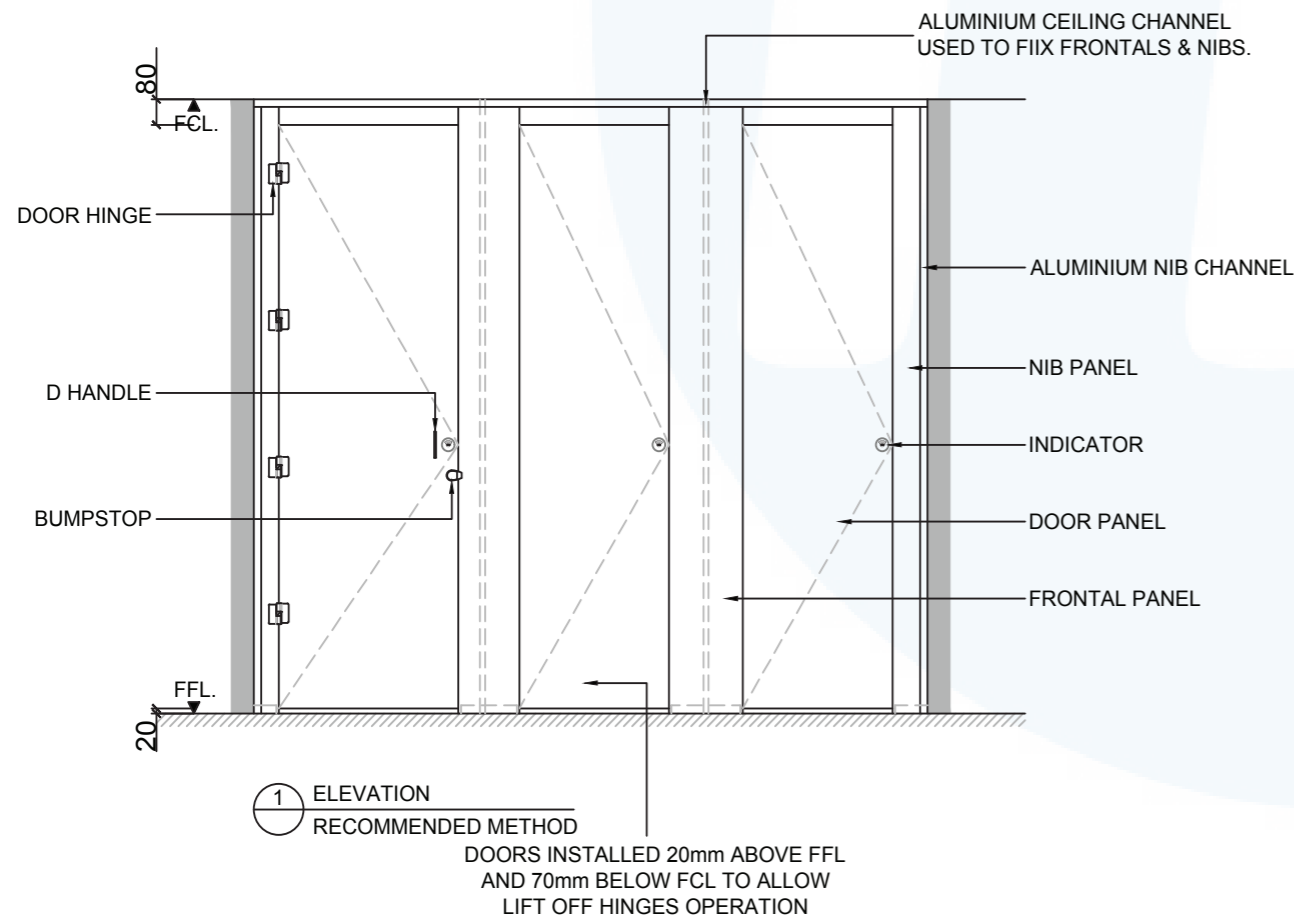
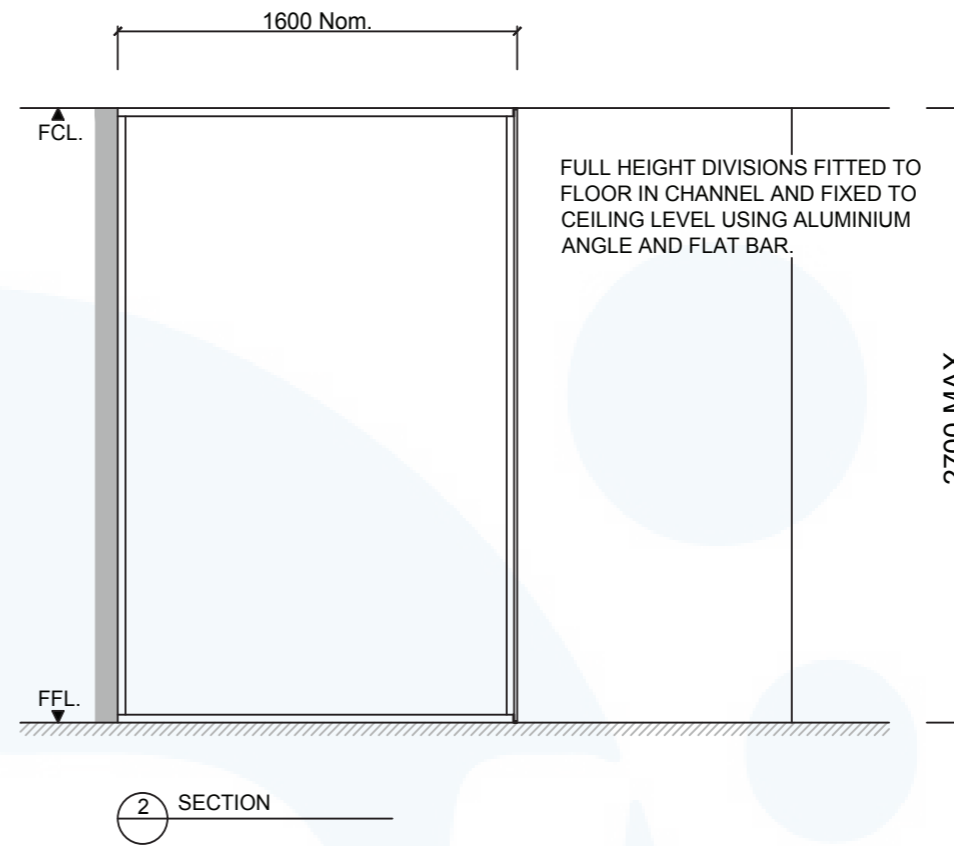
FH-A ANGLE FIXED
(CEILING FIXINGS DISCREET)

Additional Information

Standard Dimensions	Height: Up to 2700mm maximum Depth: 1600mm nominal Frontal: 180mm minimum (w) Doors: Full height with 20mm off FFL & 80mm off FCL x 595mm (w) – 600mm opening Ambulant Doors: Full height with 20mm off FFL & 80mm off FCL x 720-750mm (w) – 700mm Min. opening
Ceiling Fixing	FHa – Angle Fixed (fixings discreet) FHo – Channel Fixed (aluminium channel visible at ceiling joint)
Material Options	13mm Compact Laminate
Privacy Edge (optional)	TPI's patented Modulux® Total Privacy Solution for the ultimate in cubicle privacy (available only in 13mm Compact Laminate)
Door Furniture	Metlam® Xcel series (standard) Metlam® Designer Series Black (optional) Novas Pinnacle (optional) Metlam® 300 (optional)
Aluminium Profile	Square Clear Anodised Square Powdercoated



GRID CEILINGS MUST BE CHANNEL FIXED ONLY



SYSTEM	
TPI-FH: FULL HEIGHT (UNISEX)	
MATERIAL AVAILABILITY	
<ul style="list-style-type: none"> 13mm Compact Laminate 	
NOTES:	
ALL FIXINGS SCREWS ARE 304 GRADE STAINLESS STEEL	
NOT TO SCALE	
ALL DIMENSIONS ARE IN MILLIMETRES. FIGURED DIMENSIONS ARE NOMINAL ONLY. DO NOT SCALE OFF DRAWING. THIS DESIGN IS COPYRIGHT AND MAY NOT BE USED WITHOUT THE WRITTEN PERMISSION OF THE DESIGNER	

DRAWING	
TPI-FH DESIGN	
ISSUE / REVISION:	04
DWG NO.	
TPI-FH	
DATE DRAWN	17.4.18
DRAWN BY	CAP
APPROVED BY:	

M GS

