

# PRODUCT DETAILS



## TOILET CUBICLE – FLOOR MOUNTED OVERHEAD BRACED (FO)



TPI's Floor Mounted Overhead Braced (FO) cubicle is fixed to the floor by an angle or hidden pins, then braced overhead with an aluminium channel making it a solid performer in high-volume environments. The soaring verticals gives it a modern feel, making it at home in destination retail as well as schools and sports facilities.

Rough-house strength, good economy and a contemporary feel all in one.

Mounted directly to the floor, the FO cubicle is constructed using Compact Laminate - guaranteed to perform well wet.

**Available as Supply & Install.**

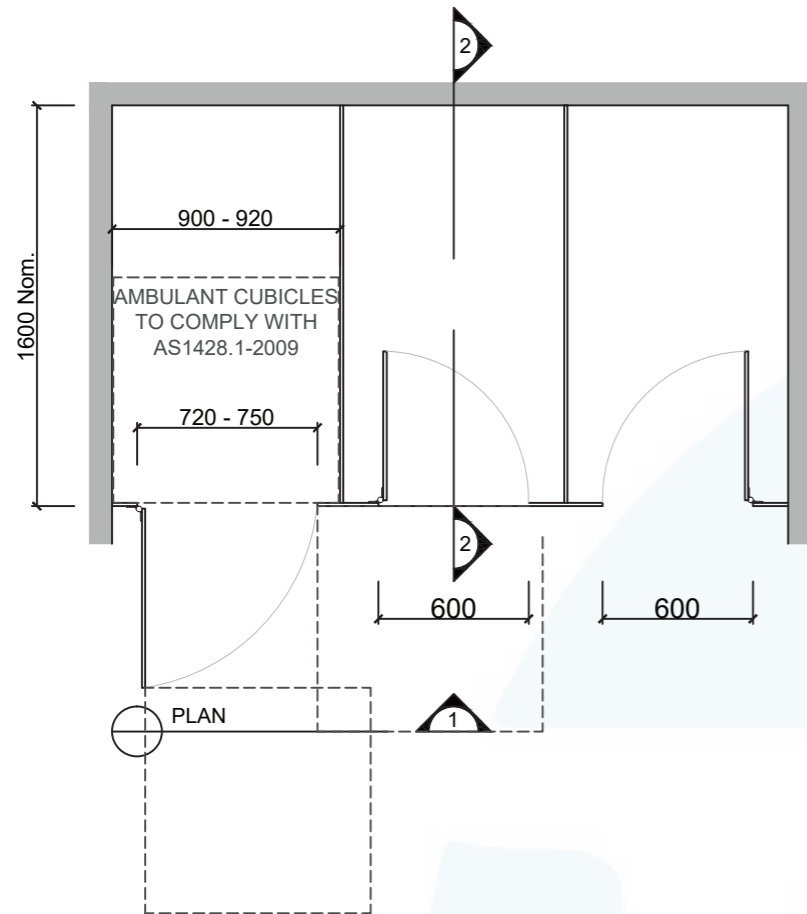
**Available as Supply only.**

### How to Specify TPI's Displayed Configuration

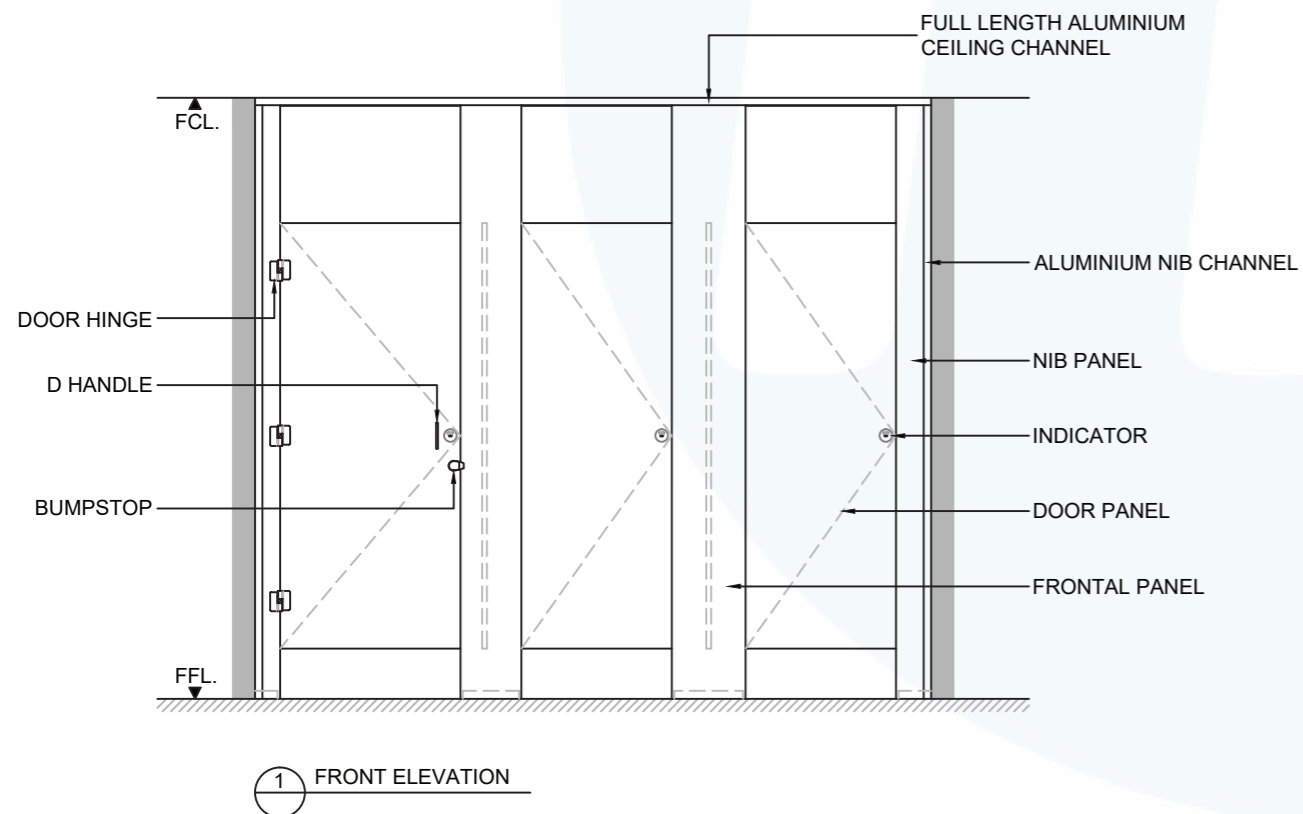
*TPI F013CL Floor Mounted Overhead Braced in 13mm Compact Laminate. Option with Modulux® Total Privacy Solution. Door Furniture to be Metlam Xcel series. Aluminium to be Square Clear Anodised. Screw fixing.*

### Additional Information

<b>Standard Dimensions</b>	Height: 2010mm (standard) Depth: 1600mm nominal Frontal: 180mm minimum (w) Doors: 1700mm (h) x 595mm (w) – 600mm opening Ambulant Doors: 1700 mm (h) x 720-750mm (w) Floor Clearance: 200mm
<b>Material Options</b>	13mm Compact Laminate 19mm Design Board
<b>Privacy Edge (optional)</b>	TPI's patented Modulux® Total Privacy Solution for the ultimate in cubicle privacy. Available only in 13mm Compact Laminate and 19mm Nuvex.
<b>Door Furniture</b>	Metlam® Xcel series (standard) Metlam® Designer Series Black (optional) Novas Pinnacle (optional) Metlam® 300 (optional)
<b>Aluminium Profile</b>	Square Clear Anodised Square Powdercoated Round Clear Anodised Round Powdercoated



2 SECTION



SYSTEM

TPI-FCo: FLOOR MOUNTED CEILING FIXED

MATERIAL AVAILABILITY

- 13mm Compact Laminate

NOTES:

ALL FIXINGS SCREWS ARE 304 GRADE STAINLESS STEEL

NOT TO SCALE

ALL DIMENSIONS ARE IN MILLIMETRES. FIGURED DIMENSIONS ARE NOMINAL ONLY. DO NOT SCALE OFF DRAWING. THIS DESIGN IS COPYRIGHT AND MAY NOT BE USED WITHOUT THE WRITTEN PERMISSION OF THE DESIGNER

DRAWING

TPI-FCo DETAILED DESIGN

ISSUE / REVISION: 02

DWG NO.

TPI-FCo

DATE DRAWN 10.5.16

DRAWN BY PB

APPROVED BY:

*MGS*

