

# PRODUCT DETAILS



## SHOWER- PEDESTAL MOUNTED CEILING FIXED (PC-S)



PCo-S CHANNEL FIXED  
(ALUMINIUM AT CEILING JOINT)



PCa-S ANGLE FIXED  
(CEILING FIXINGS DISCREET)

The TPI Pedestal mounted Ceiling fixed (PC) shower partition system maximises the feeling of space in low ceiling rooms whilst delivering a streamlined, vertical aesthetic in high ceiling rooms.

Mounted above the wash area, PC panels come in the full range of Compact Laminate.

**Available as Supply & Install.**

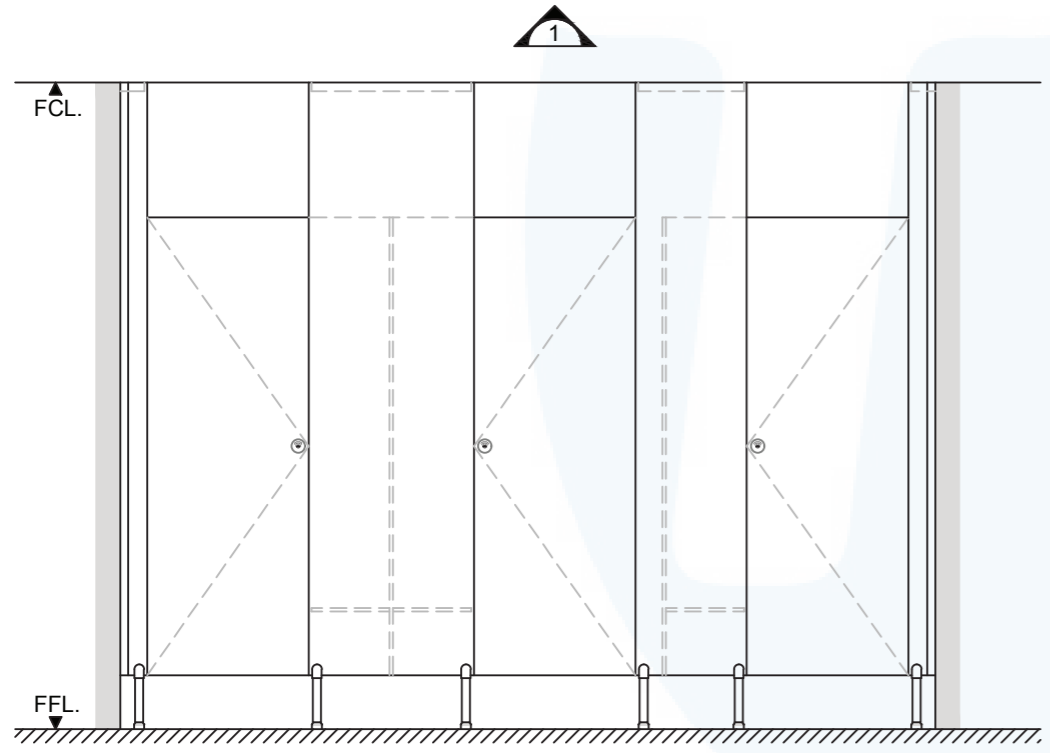
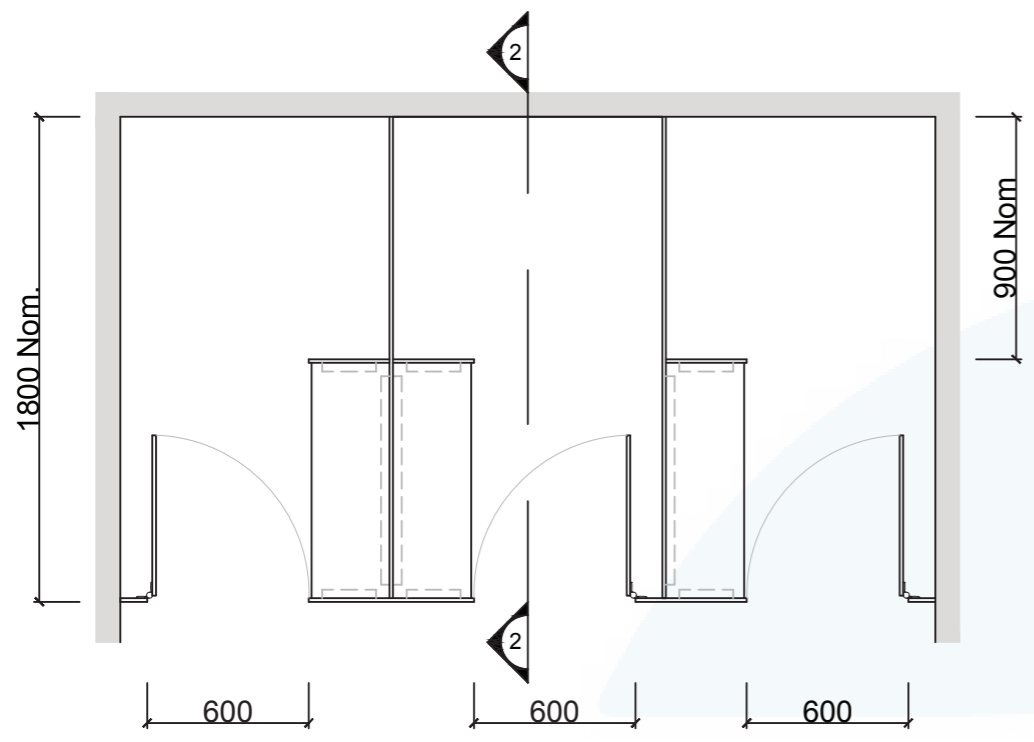
**Available as Supply only (channel fixed only)**

### How to Specify TPI's Displayed Configuration

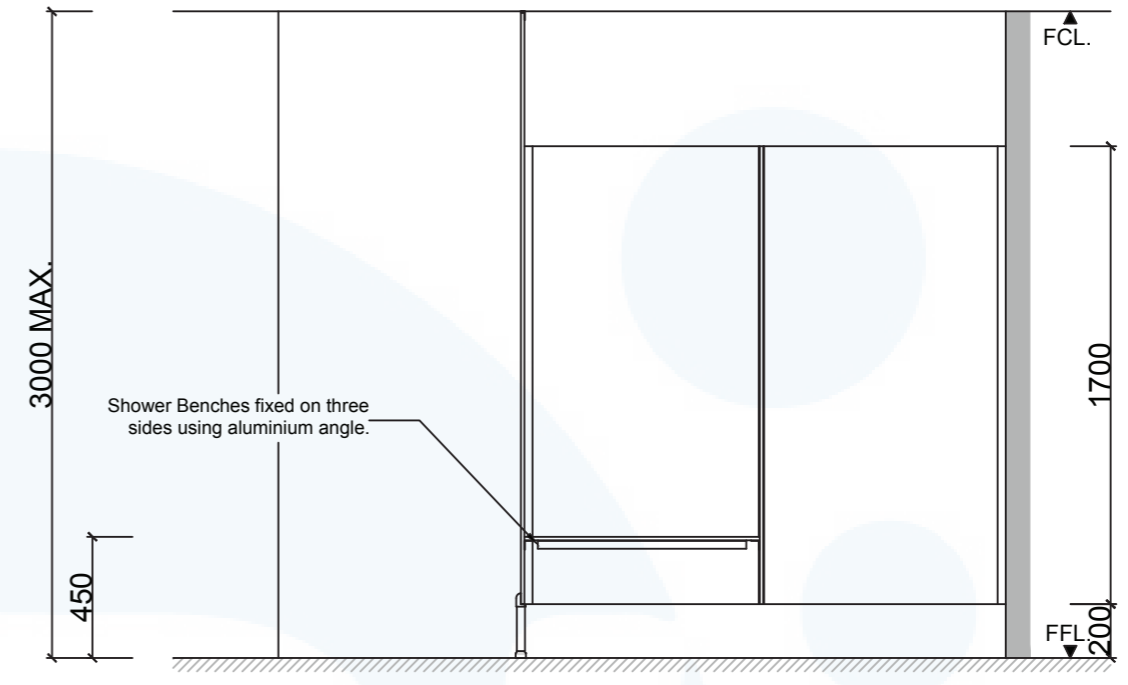
*TPI PC13CL Pedestal Mounted Ceiling Fixed in 13mm Compact Laminate. Pedestal to be 200mm Aluminium leg. Option with Modulux® Total Privacy Solution. Door Furniture to be Metlam Xcel series. Aluminium to be Square Clear Anodised. Screw fixing.*

### Additional Information

<b>Standard Dimensions</b>	Height: up to 3000mm max Frontal: 300mm minimum (w) Doors: 1700mm (h) x 595mm (w) – 600mm opening Ambulant Doors: 1700 mm (h) x 720-750mm (w) Shower Seat: 300mm x 900mm nominal Splash Nib: 320mm x 1700mm nominal Floor Clearance: 200mm
<b>Ceiling Fixing</b>	PCa-S – Angle Fixed (fixings discreet but will require secure fixing points above the ceiling) PCo -S- Channel Fixed (aluminium channel visible at ceiling joint).
<b>Material Options</b>	13mm Compact Laminate
<b>Pedestal Legs</b>	Standard 200mm Stainless Steel leg (d 32mm) 100mm Aluminium leg (d 32mm) optional Black Powdercoating.
<b>Privacy Edge (optional)</b>	TPI's patented Modulux® Total Privacy Solution for the ultimate in cubicle privacy.
<b>Door Furniture</b>	Metlam® Xcel series (standard) Metlam® Xcel series Black (optional) Novas Pinnacle (optional) Novas Ultima (optional) Metlam® 300 (optional)
<b>Aluminium Profile</b>	Square Clear Anodised Square Powdercoated



1 FRONT ELEVATION



2 SECTION

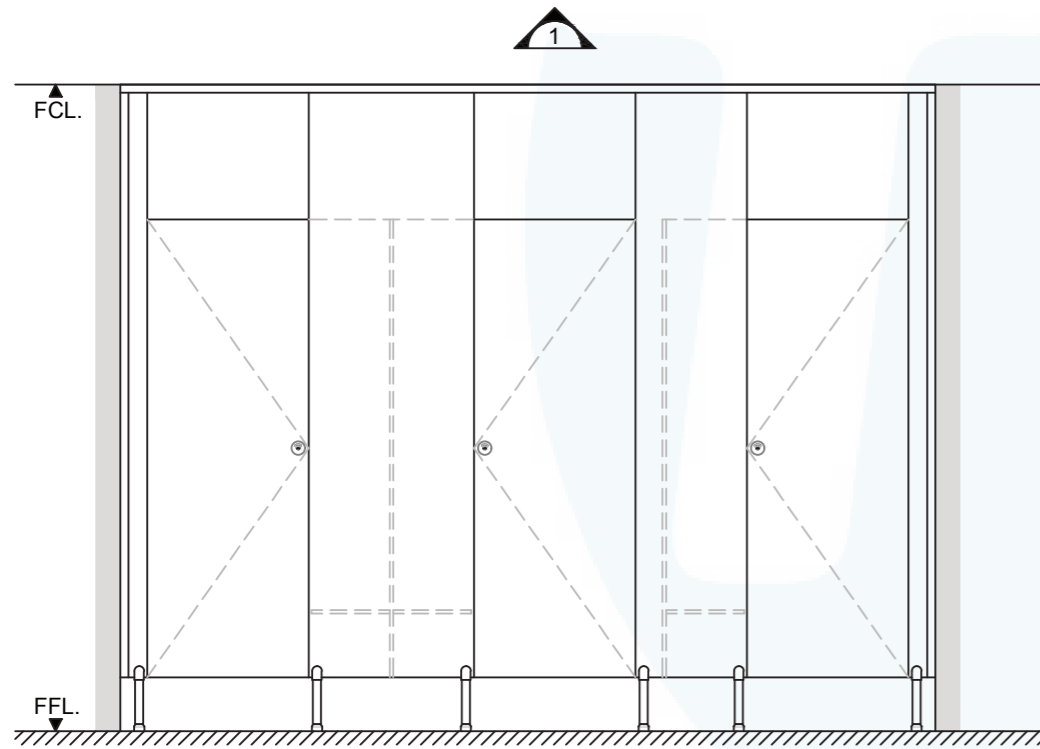
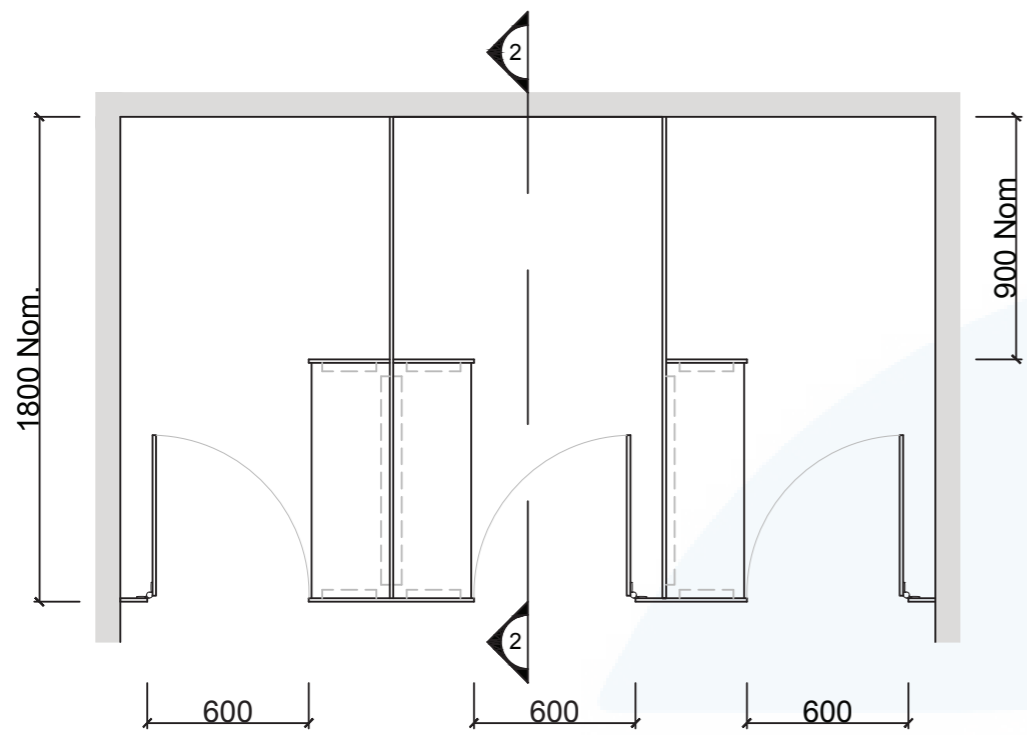
**GRID CEILINGS MUST BE CHANNEL FIXED ONLY**

<b>SYSTEM</b>	
TPI-PCa-S: PEDESTAL MOUNTED & CEILING FIXED with ANGLE - SHOWER	
<b>MATERIAL AVAILABILITY</b>	
<ul style="list-style-type: none"> <li>13mm Compact Laminate</li> </ul>	
<b>NOTES:</b>	
ALL FIXINGS SCREWS ARE 304 GRADE STAINLESS STEEL	
<b>NOT TO SCALE</b>	
ALL DIMENSIONS ARE IN MILLIMETRES. FIGURED DIMENSIONS ARE NOMINAL ONLY. DO NOT SCALE OFF DRAWING. THIS DESIGN IS COPYRIGHT AND MAY NOT BE USED WITHOUT THE WRITTEN PERMISSION OF THE DESIGNER	

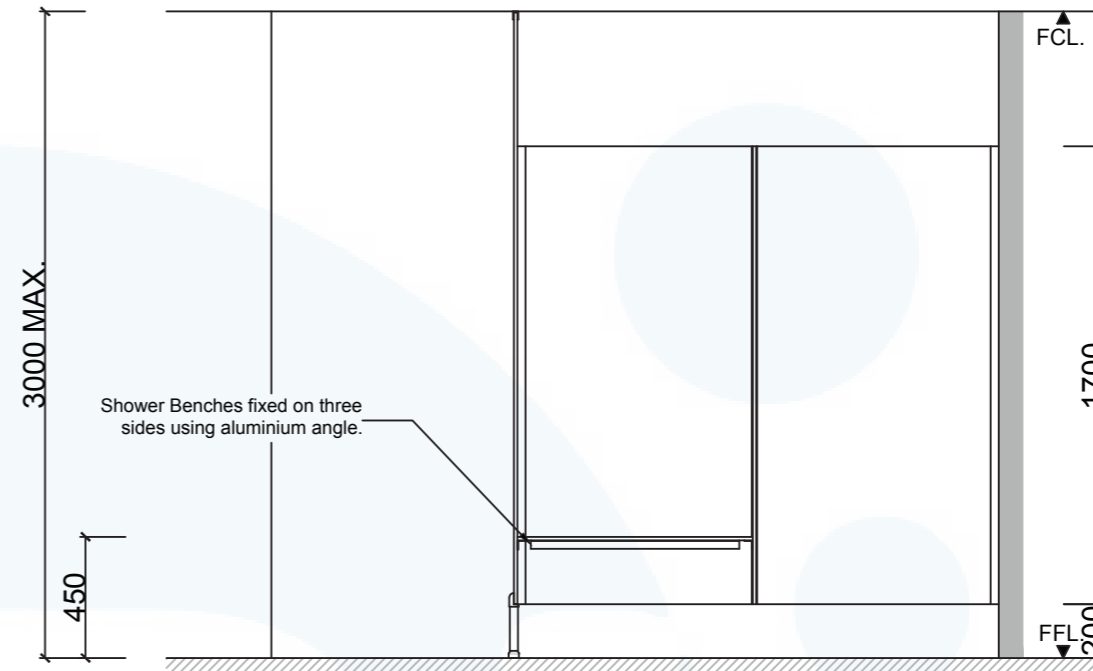
<b>DRAWING</b>	
TPI-PCa-S DETAILED DESIGN	
ISSUE / REVISION:	03
DWG NO.	
<b>TPI-PCa-S</b>	
DATE DRAWN	17.5.17
DRAWN BY	CAP

*MGS*





1 FRONT ELEVATION



2 SECTION

**GRID CEILINGS MUST BE CHANNEL FIXED ONLY**

**SYSTEM**

TPI-PCo-S: PEDESTAL MOUNTED & CEILING FIXED with FULL LENGTH CHANNEL - SHOWER

**MATERIAL AVAILABILITY**

- 13mm Compact Laminate

**NOTES:**

ALL FIXINGS SCREWS ARE 304 GRADE STAINLESS STEEL

**NOT TO SCALE**

ALL DIMENSIONS ARE IN MILLIMETRES. FIGURED DIMENSIONS ARE NOMINAL ONLY. DO NOT SCALE OFF DRAWING. THIS DESIGN IS COPYRIGHT AND MAY NOT BE USED WITHOUT THE WRITTEN PERMISSION OF THE DESIGNER

**DRAWING**

TPI-PCo-S DETAILED DESIGN

ISSUE / REVISION: 03

DWG NO.

**TPI-PCo-S**

DATE DRAWN 17.5.17

DRAWN BY CAP

*MGS*

