

PRODUCT DETAILS



TOILET CUBICLE – PEDESTAL MOUNTED FREE STANDING (PF)



NOTE: This system can only be installed on a concrete slab.

Designed by TPI, the Pedestal Mounted, Free Standing cubicle combines an uncluttered above-head line with easy-to-clean accessibility at the floor. Engineered to stand strong, the open spaces of this cubicle allow it to sit well in tight rooms.

Recommended for offices and restaurants, light, airy and easy to clean.

PF cubicles are mounted on stainless steel pedestals raising them off the floor, clear of the wash area. PF cubicles can be constructed from a range of 33mm & 18mm Decorated HMR P/Board.

Available as Supply & Install only.

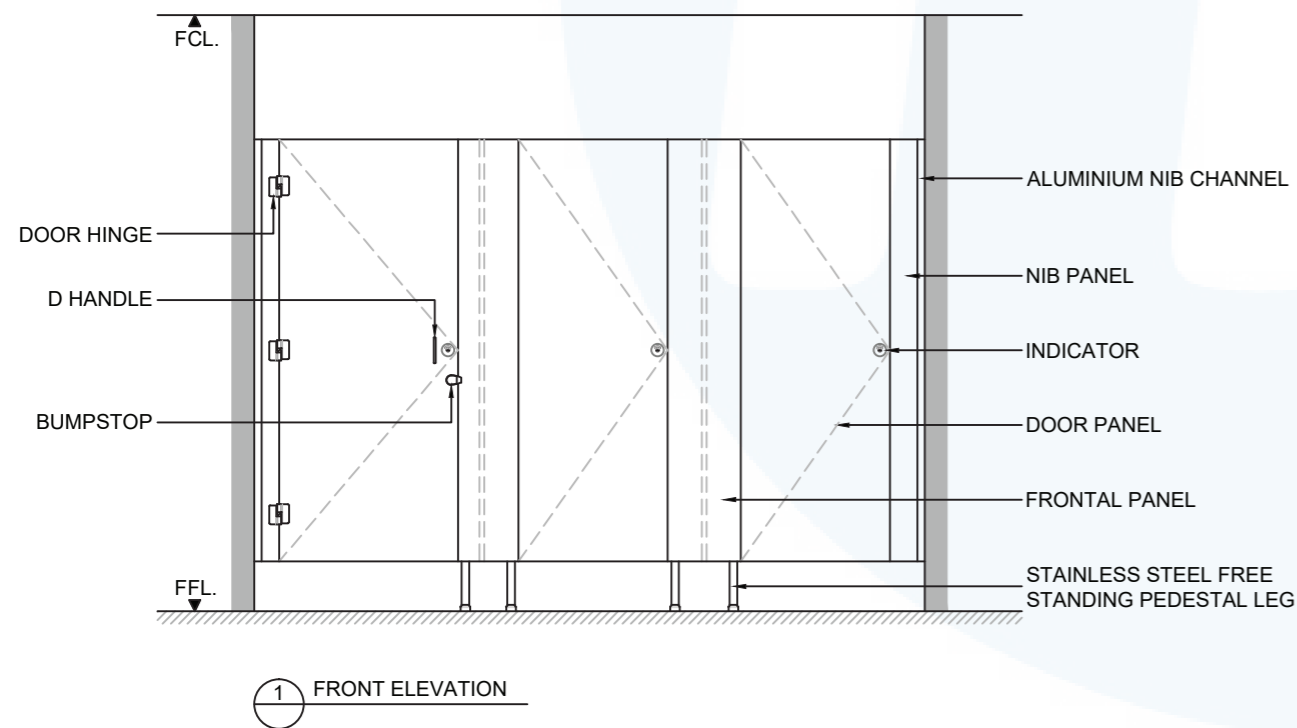
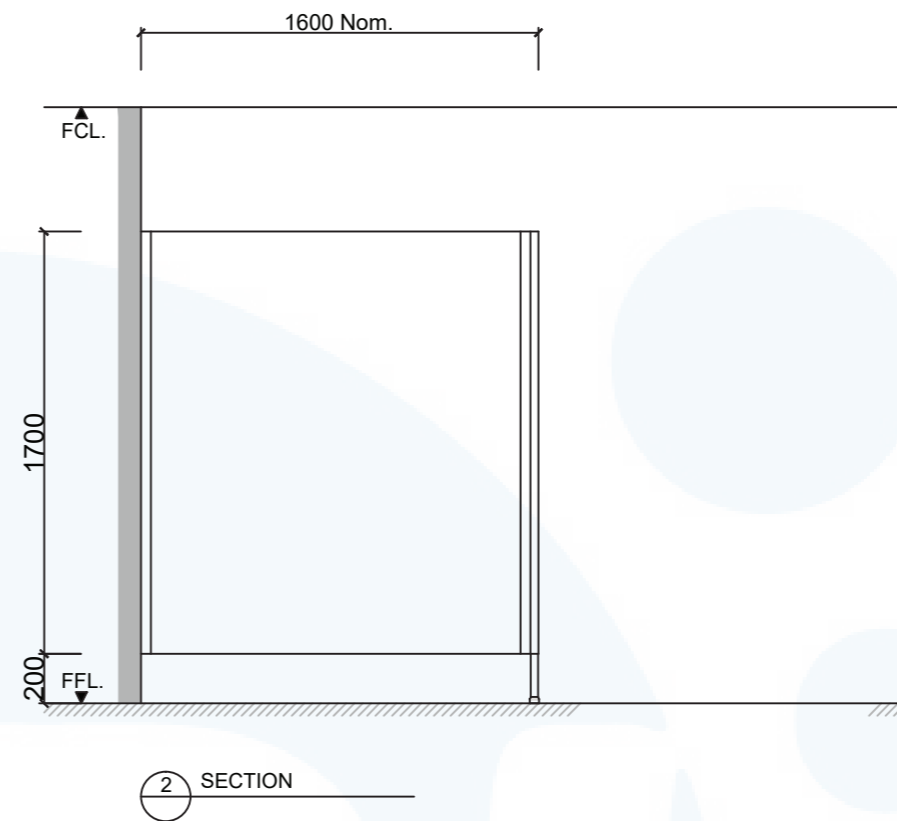
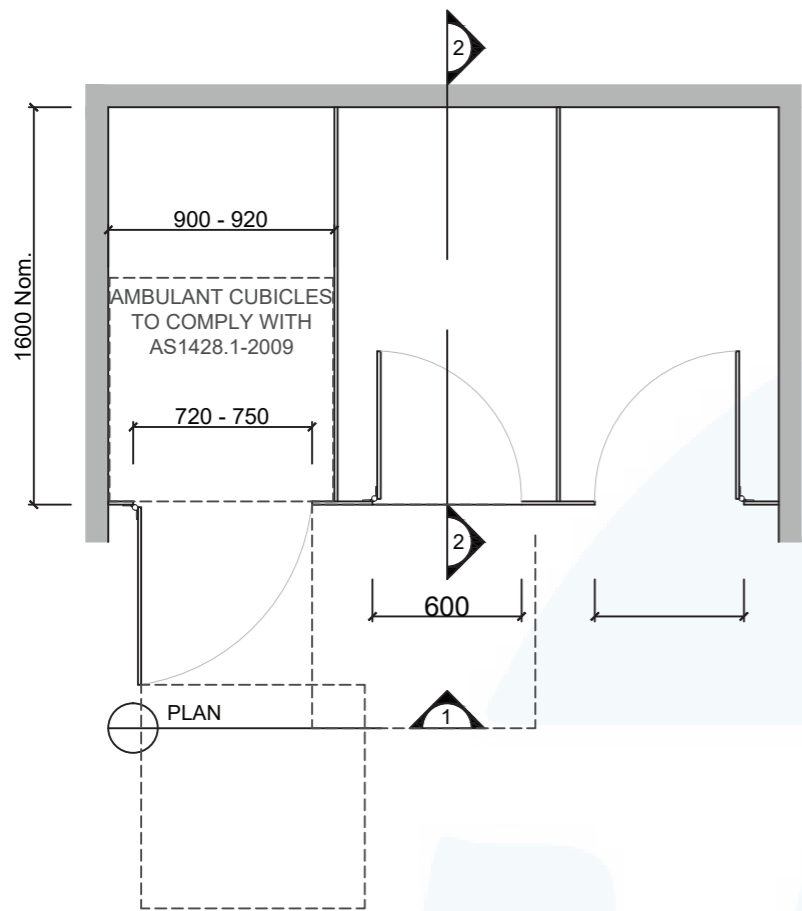
How to Specify TPI's Displayed Configuration

TPI PF33L Pedestal Mounted Free Standing in 33mm Decorated HMR P/Board with 18mm MR. Door Furniture to be Metlam Xcel series. Aluminium to be Clear Anodised Square. Screw Fixing.

NOTE: This system can only be installed on a concrete slab.

Additional Information

Standard Dimensions	Height: 1900mm (maximum) Depth: 1600mm nominal Frontal: 200mm minimum (w) for structural integrity Doors: 1700mm (h) x 595mm (w) – 600mm opening Ambulant Doors: 1700 (h) x 720-750mm (w) Floor Clearance: 200mm
Material Options	33mm Decorated MR P/Board 18mm Decorated MR P/Board (divisions only)
Pedestal Leg	200mm Stainless Steel leg (d 32mm) (optional black Powdercoating)
Door Furniture	Metlam® Xcel series (standard) Metlam® Designer Series Black (optional) Novas Pinnacle (optional) Metlam® 300 (optional) Allgood Modric (optional 32mm board only)
Aluminium Profile	Square Clear Anodised Square Powdercoated



SYSTEM

TPI-PF: PEDESTAL MOUNTED FREE STANDING

MATERIAL AVAILABILITY

- 32mm Laminated MR MDF w/ 18mm Divisions

NOTES:

ALL FIXINGS SCREWS ARE 304 GRADE STAINLESS STEEL

NOT TO SCALE

ALL DIMENSIONS ARE IN MILLIMETRES. FIGURED DIMENSIONS ARE NOMINAL ONLY. DO NOT SCALE OFF DRAWING. THIS DESIGN IS COPYRIGHT AND MAY NOT BE USED WITHOUT THE WRITTEN PERMISSION OF THE DESIGNER

DRAWING

TPI-PF DETAILED DESIGN

ISSUE / REVISION: 02

DWG NO.

TPI-PF

DATE DRAWN 10.5.16

DRAWN BY PB

APPROVED BY:

MGS



NOTE: This system can only be installed on a concrete slab.
Max system height 1900mm AFFL