

PRODUCT DETAILS



TOILET CUBICLE – RECESSED PEDESTAL OVERHEAD BRACED (RO)



NOTE: This system can only be installed on a concrete slab.

An original TPI design the RO cubicle system floats in space by hiding its structural elements beyond the sight line of the external observer.

The RO cubicle system is a premium choice for prestige projects.

Available as Supply & Install only.

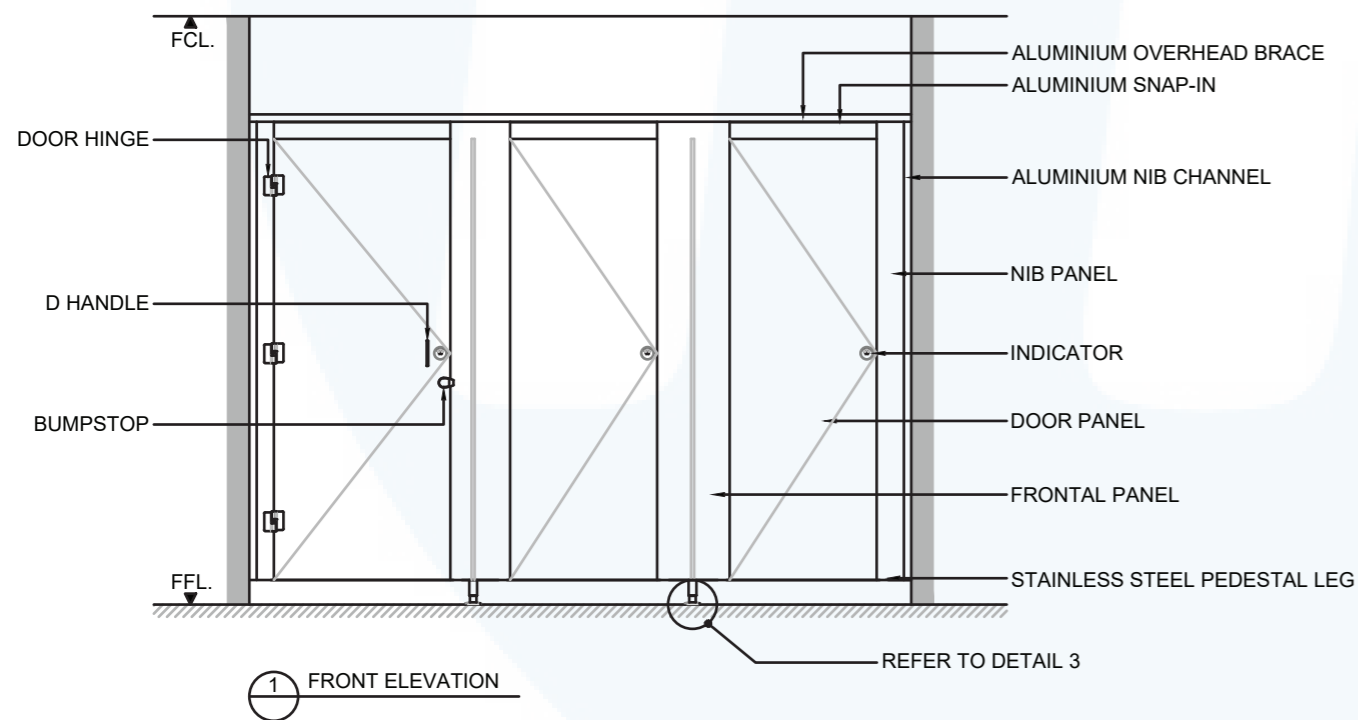
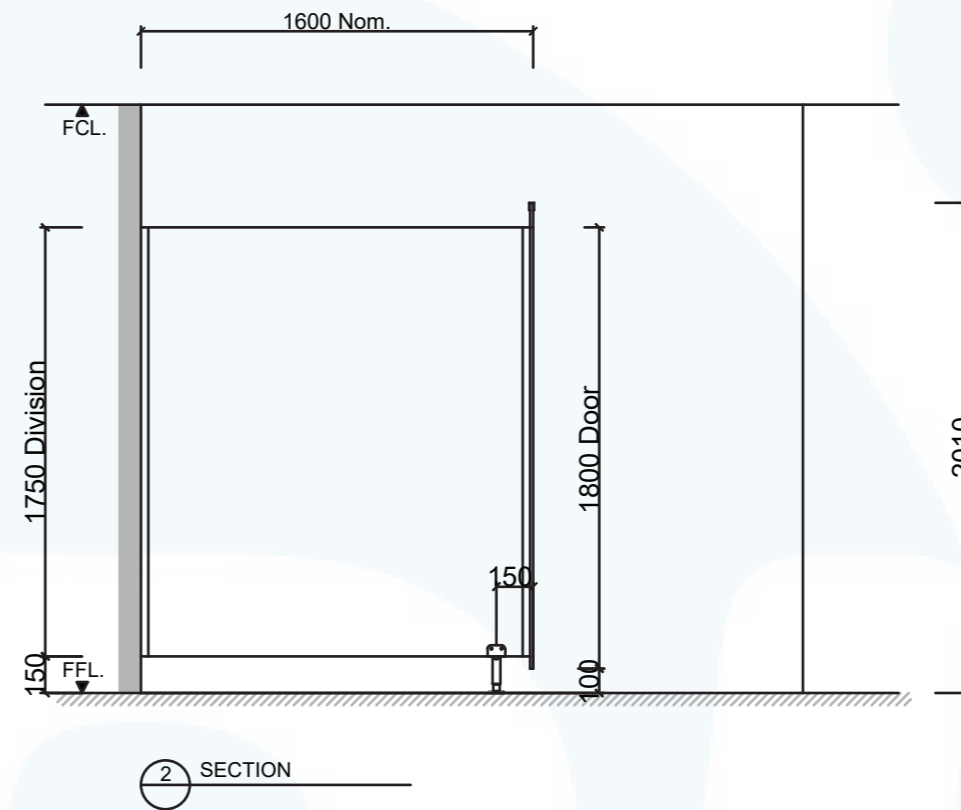
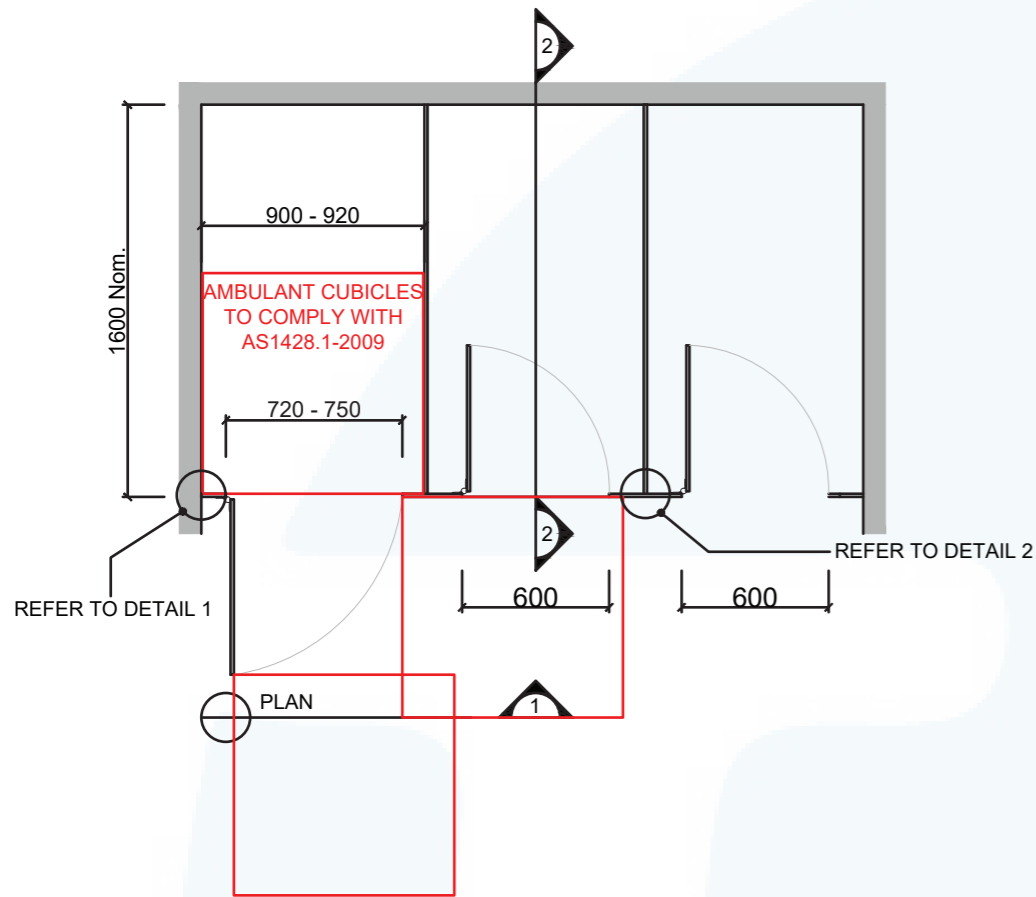
How to Specify TPI's Displayed Configuration

TPI R013CL Recessed Pedestal Overhead braced in 13mm Compact Laminate. Pedestal mount is 150mm. Door Furniture to be Metlam Xcel series. Aluminium to be Square Clear Anodised. Screw fixing.

NOTE: This system can only be installed on a concrete slab.

Additional Information

| | |
|----------------------------|--|
| Standard Dimensions | Height: Up to 3000mm maximum Depth: 1600mm nominal Frontal: 180mm minimum (w) Doors: 1800mm (h) x 595mm (w) – 600mm opening Ambulant Doors: 1800 (h) x 730-750mm (w) Floor Clearance: 100mm |
| Material Options | 13mm Compact Laminate 18mm Decorated MR P/Board Colour 33mm Decorated MR P/Board with 18mm divisions |
| Pedestal Leg | Custom 150mm Aluminium leg (d 38mm) optional Black Powdercoating |
| Door Furniture | Metlam® Xcel series (standard) Metlam® Designer Series Black (optional) Novas Pinnacle (optional) Metlam® 300 (optional) Allgood Modric (optional 32mm board only) |
| Aluminium Profile | Square Clear Anodised Square Powdercoated Round Clear Anodised Round Powdercoated |



SYSTEM

TPI-RO: RECESSED PEDESTAL MOUNTED OVERHEAD BRACED

MATERIAL AVAILABILITY

- 13mm Compact Laminate
- 18mm Laminated MR MDF
- 32mm Laminated MR MDF w/ 18mm Divisions

NOTES:

ALL FIXINGS SCREWS ARE 304 GRADE STAINLESS STEEL

NOT TO SCALE

ALL DIMENSIONS ARE IN MILLIMETRES. FIGURED DIMENSIONS ARE NOMINAL ONLY. DO NOT SCALE OFF DRAWING. THIS DESIGN IS COPYRIGHT AND MAY NOT BE USED WITHOUT THE WRITTEN PERMISSION OF THE DESIGNER

DRAWING

TPI-RO DETAILED DESIGN

ISSUE / REVISION: 00

DWG NO.

TPI-RO

DATE DRAWN 23.2.22

DRAWN BY AW

APPROVED BY:

MGS



NOTE: This system can only be installed on a concrete slab