

# PRODUCT DETAILS



## TOILET CUBICLE – RECESSED PEDESTAL MOUNTED RECESSED OVERHEAD BRACED (RR)



**NOTE: This system can only be installed on a concrete slab.**

An original TPI design the RR cubicle system floats in space by hiding its structural elements beyond the sight line of the external observer.

The RR cubicle system is a premium choice for prestige projects.

**Available as Supply & Install only.**

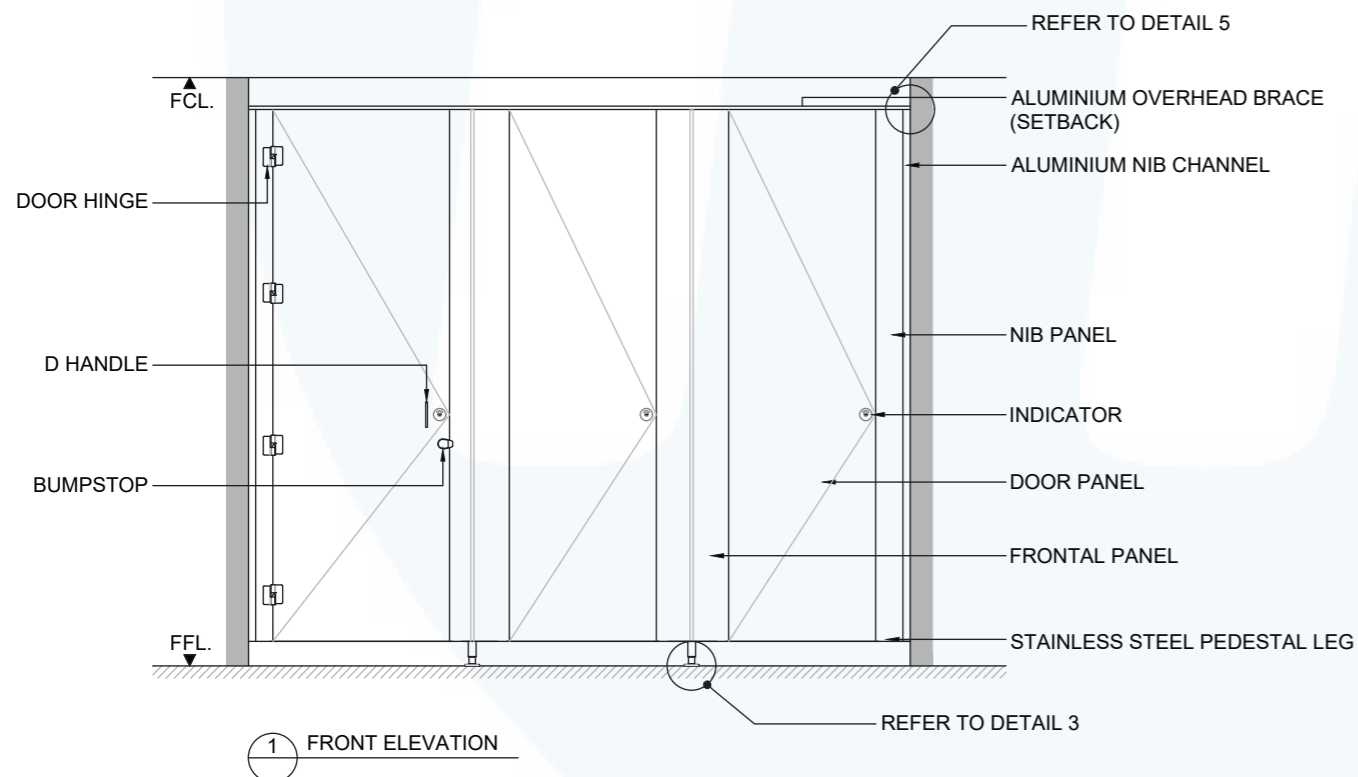
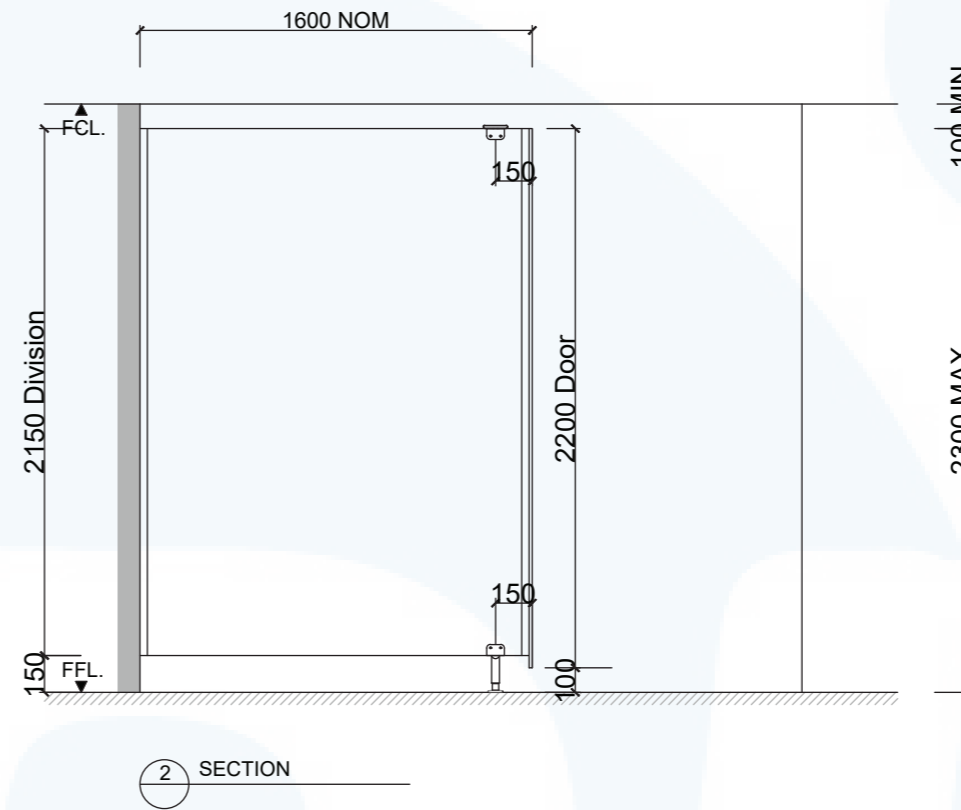
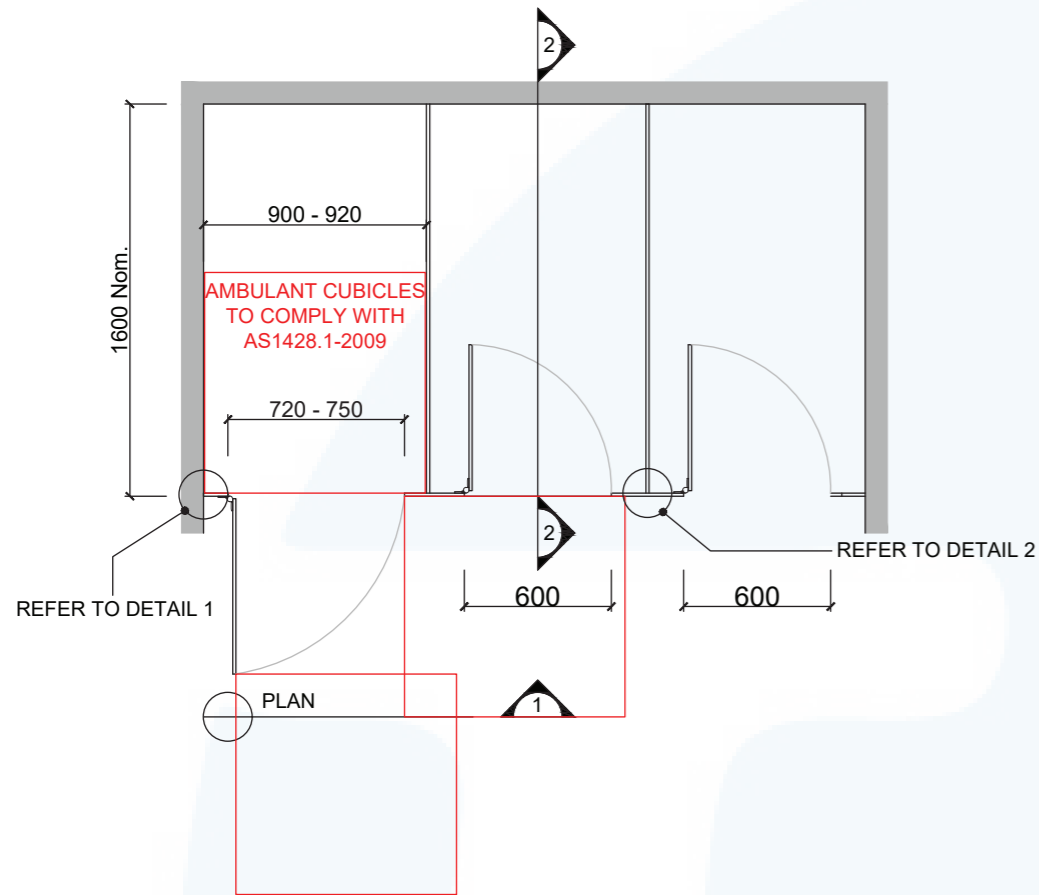
### How to Specify TPI's Displayed Configuration

*TPI RR13CL Recessed Pedestal Recessed Overhead braced in 13mm Compact Laminate. Pedestal mount is 150mm. Door Furniture to be Metlam Xcel series. Aluminium to be Square Clear Anodised with overhead box brace. Screw fixing.*

**Note:** Not suitable for high traffic areas e.g, Schools, Pubs and Clubs  
Maximum row of x4 cubicles

### Additional Information

<b>Standard Dimensions</b>	Height: Up to 2300mm maximum Depth: 1600mm nominal Frontal: 180mm minimum (w) Doors: 2200mm max (h) x 595mm (w) – 600mm opening Ambulant Doors: 2200 max (h) x 730-750mm (w) Floor Clearance: 100mm
<b>Material Options</b>	13mm Compact Laminate 18mm Decorated MR P/Board Colour 33mm Decorated MR P/Board with 18mm divisions
<b>Pedestal Leg</b>	Custom 150mm Aluminium leg (d 38mm). Optional Black Powdercoating.
<b>Door Furniture</b>	Metlam® Xcel series (standard) Metlam® Designer Series Black (optional) Novas Pinnacle (optional) Metlam® 300 (optional) Allgood Modric (optional 32mm board only)
<b>Aluminium Profile</b>	Square Clear Anodised Square Powdercoated



**SYSTEM**

TPI-RR: RECESSED PEDESTAL MOUNTED RECESSED OVERHEAD BRACED

**MATERIAL AVAILABILITY**

- 13mm Compact Laminate
- 18mm Laminated MR MDF
- 33mm Laminated MR MDF w/ 18mm Divisions

**NOTES:**

ALL FIXINGS SCREWS ARE 304 GRADE STAINLESS STEEL

**NOT TO SCALE**

ALL DIMENSIONS ARE IN MILLIMETRES. FIGURED DIMENSIONS ARE NOMINAL ONLY. DO NOT SCALE OFF DRAWING. THIS DESIGN IS COPYRIGHT AND MAY NOT BE USED WITHOUT THE WRITTEN PERMISSION OF THE DESIGNER

THIS SYSTEM MUST HAVE DIVISIONS TO BE APPLICABLE.

**DRAWING**

TPI-RR DETAILED DESIGN

ISSUE / REVISION: 00

DWG NO.

**TPI-RR**

DATE DRAWN 23.2.22

DRAWN BY AW

APPROVED BY:

*MGS*

**NOTE: This system can only be installed on a concrete slab**

